



# Garden Planning & Seed Starting

Janean Curfman  
Interpretive Naturalist

January 15, 2025



"ANYONE WHO THINKS THAT GARDENING  
BEGINS IN THE SPRING AND ENDS IN THE  
FALL IS MISSING THE BEST PART OF THE  
WHOLE YEAR; FOR GARDENING BEGINS  
IN JANUARY WITH THE DREAM."

---

JOSEPHINE NEUSE

AFTER THE  
WINTER WE  
HAD...

SEEDS

GARDEN  
*Supplies*

I'LL  
BE PLANTING  
ACCORDINGLY  
THIS SPRING...

WINTER  
SQUASH

ICEBERG  
LETTUCE

SNOW  
PEAS





# Seed starting



- **Direct Seeding** right into the garden at the right time of year
- Starting seeds inside and **transplanting** young plants out into the garden
- **Succession planting**
- Special instructions: **stratification**





# Seed starting – *direct seeding*



- Root vegetables: carrots, turnips, radishes, beets...
- Legumes – beans and peas
- Cucurbits – cucumbers, melons, squash/pumpkins
- Corn





# Seed starting – *transplanting*



- Tomato, eggplant & peppers
- Broccoli, brussels sprouts, kale, cauliflower & cabbage
- Leafy Greens
- Herbs\*





# Seed starting – *what to grow?*



- What do you like best? Grow that! Appreciate the fruits of your labor
- Plan for sunlight – pick the sunniest spot in your yard, plant taller plants on north side so they don't shade other plants
- Plant for moisture and other conditions
- Best bang for your buck: one giant broccoli plant provides one side dish whereas a single bean vine produces for months!

# GOURD

## Luffa

*egyptiaca*



So  
last  
spring

### HEIRLO

This unusual  
gourd is fun  
to grow  
and will  
provide  
you with  
long-lasting,  
natural,  
eco-friendly  
sponges!

Botanical INTERESTS®

PEEL BACK FLAPS  
MORE INFO INSIDE



## GOURD

### Luffa



Seedling

#### Days to Emerge:

10 – 25 Days

#### Seed Depth:

1/2"

#### Seed Spacing:

A group of 3 seeds  
every 12" – 18"

#### Row Spacing:

Plant against fence  
or trellis

#### Thinning:

When 1" tall, thin to  
1 every 12" – 18"

#### Maturity:

110 Days

#### Date Seed Sown

Luffas are great for scrubbing your back, washing dishes, cleaning the barbeque grill and much, much more! Grow your own supply of sponges and give some as gifts! The 12"–24" long gourds are so interesting to watch develop in the garden. Vigorous vines can reach 20'; grow on a trellis or fence.

**When to sow outside:** 2 to 4 weeks after your average last frost date, and when soil temperature is above 60°F.

**When to start inside:** *Recommended for cold climates:* 2 to 4 weeks before your average last frost date. Roots sensitive to disturbance; sow into biodegradable pots that can be directly planted in the ground.

**Special germination instructions:** Nick seeds with a file or nail clipper, or soak 12 to 24 hours before sowing.

We are dedicated to inspiring and educating the gardener in you.  
That's why we've put even more helpful information inside.



cut out for  
plant tag

**OPEN POLLINATED  
AND  
UNTREATED**



© Botanical Interests, Inc.  
660 Compton Street, Broomfield, Colorado 80020  
www.botanicalinterests.com

Lot# 28203 Packed for 2020  
Sell by 12/31/2020



# Seed starting – *succession planting*



- Stagger seed starting times for a continuous harvest of certain crops – carrots, lettuce, peas, beans...
- Replace cool weather crops that don't do well in warmer temperatures (peas, leafy greens) with warm weather ones that will thrive in July and August (green beans, hardy greens)





# Seed starting – *containers*



- Trays with cells or cardboard egg cartons
- Reuse plastic fruit and vegetable “clamshell” containers, yogurt cups, etc.
- For peat’s sake, leave the peat pots behind!  
Cow Pots = eco-friendly alternative





# Seed starting – *growing medium*



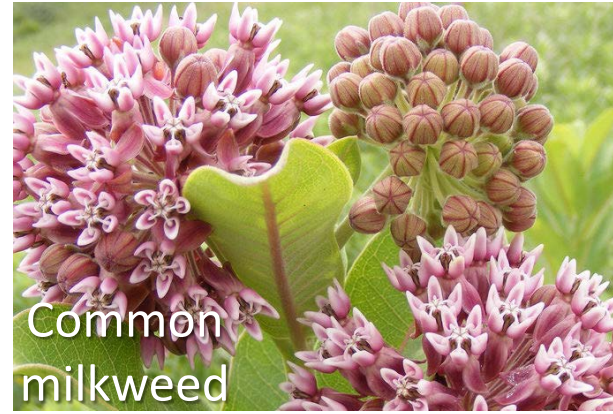
- Germination mix
- Potting soil
- Garden soil
- Compost\*\*\*
- Fertilizing:
  - After plant has 2<sup>nd</sup> set of leaves
  - Dilute until plant is larger





# Summit County Seed Swap Days

- Thursday January 23 & Friday January 24
- Seed starter kit raffle
- SMP biologist Chris Chaney will be giving away native wildflower seeds
- **Stratification:** native seeds need a period of cold & moisture to sprout



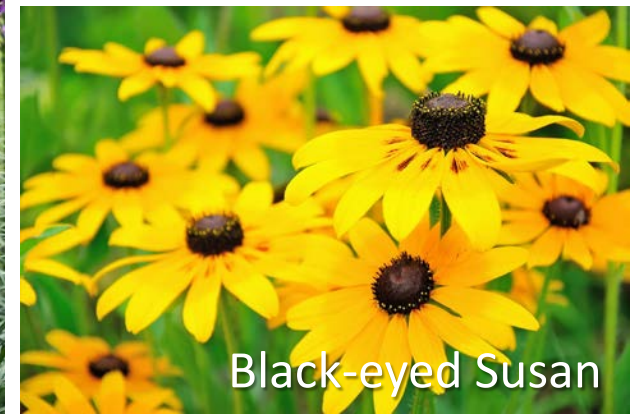
Common  
milkweed



Blue flag iris



Prairie blazing star



Black-eyed Susan



# Garden Style



## Raised Beds & Containers:

- Greater initial investment of resources
- Lower maintenance and pests/weeds
- Consistent soil health – not easily compacted, can be filled with exactly what you want
- Less water\* & amendment use
- Great for smaller area

## Traditional / In-Ground Gardening

- Easier/cheaper to start
- Higher maintenance for pest/weed control
- Soil compacts underfoot
- More water\* & soil amendment needed
- Useful over a larger area



# Garden Style – *my gardens*





# Garden Style – *mulch*



- Wood chips\* – Chip Drop, local municipalities (\*be sure they are aged)
- Dry grass clippings, fallen leaves
- Cardboard
- Straw

\*Anything to lock in moisture and keep out weeds!





DAD  
DAD  
DAD

DAD  
DAD  
DAD

DAD  
DAD  
DAD

NET WEIGHT 60 KGS  
GREEN COFFEE

NET WEIGHT 60 KGS  
GREEN COFFEE

Vinyl Siding  
Revestimento de vinil  
Revestimentos Vinilco

3A3 B85





REVESTIMENTO DE VINIL  
343 B01

Vinyl Siding  
Revestimento de Vinil  
343 B01

343 B01  
REVESTIMENTO DE VINIL  
343 B01

343 B01



# Garden Style – *living mulch*





# Garden Style – *living mulch*



Common  
blue violet

Wild  
Strawberry



# Garden Style – *living mulch*



Pussytoes



# Garden Style – *think vertical*





# Garden Style – *think vertical*





# Diversity in your garden



- Think of your garden as a tiny little ecosystem, make it as diverse as possible
- Avoiding monoculture can confuse pests
- Companion planting – how can plants help each other?
  - Act as mulch
  - Draw in pollinators
  - Provide shade









Sunflower



Sage

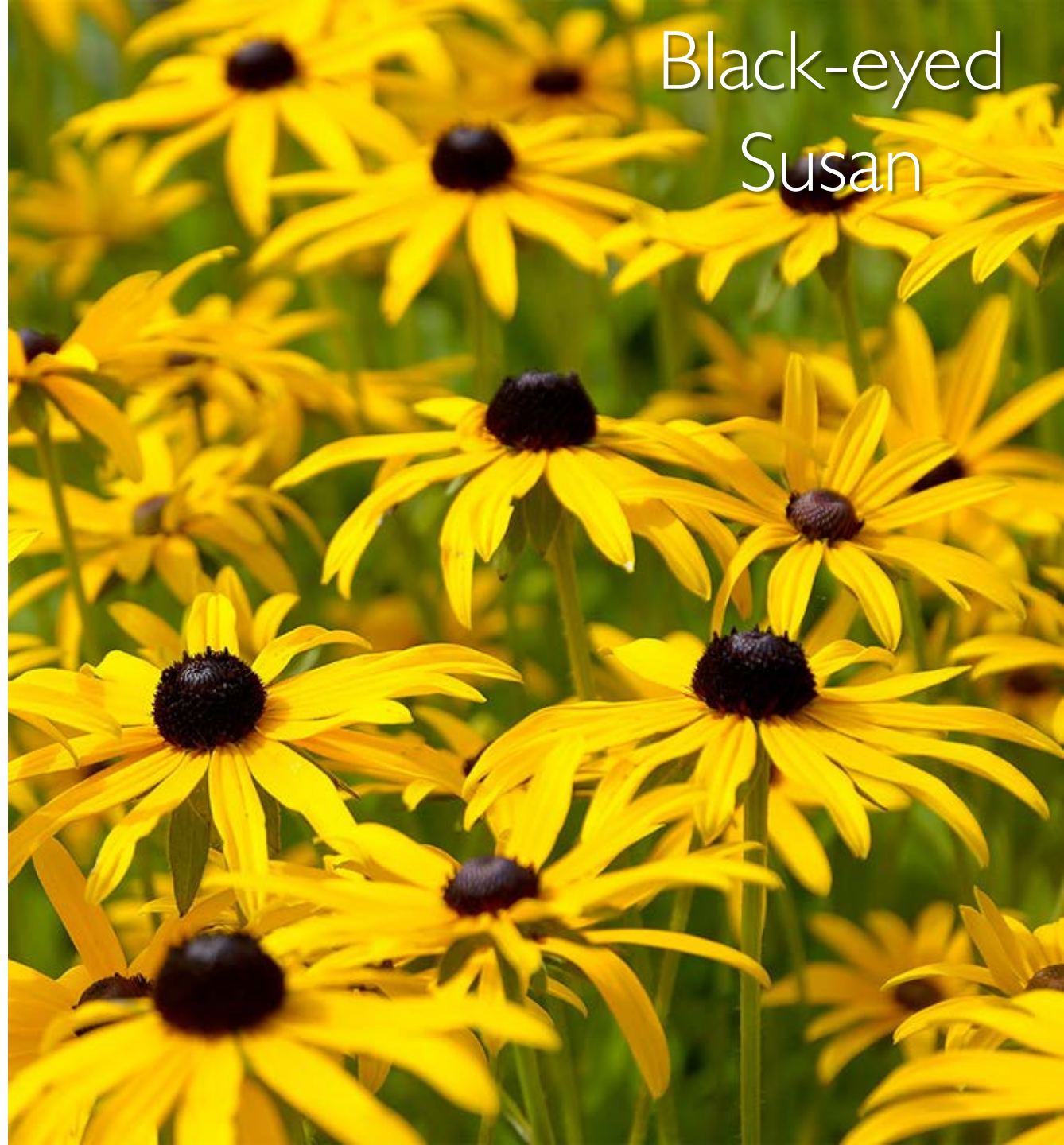


Dill



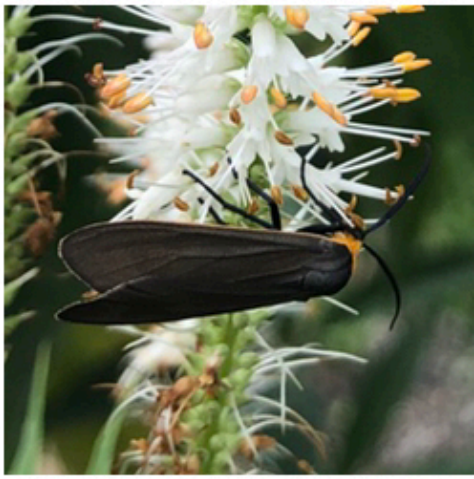
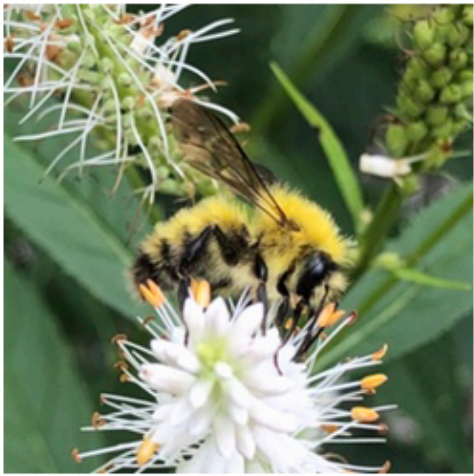


Purple  
coneflower

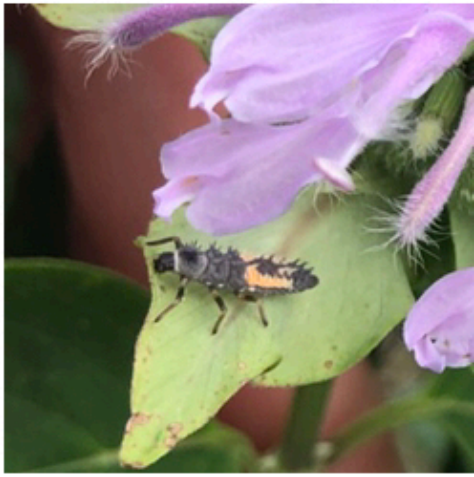
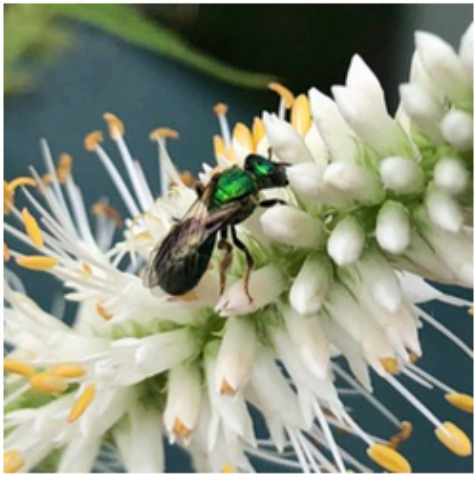
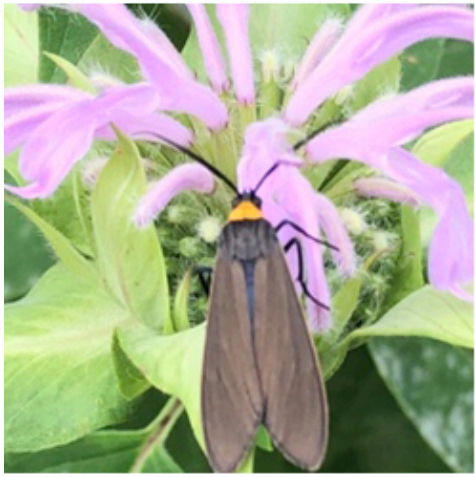


Black-eyed  
Susan





If you plant it, they will come!





# Garden diversity – *perennial food plants*

- Low-maintenance: plant and forget
- Can be a part of landscaping
- Beneficial to wildlife
- Delicious!





# Garden diversity – *perennial food plants*



## Trees

- American plum
- Apple
- Cherry
- Pawpaw
- Peach
- Pecan
- Persimmon
- Walnut

## Vines

- Grape
- Hardy kiwi

## Flowers & Herbs

- Asparagus
- Catnip
- Chives
- Lavender
- Lemon balm
- Mint\* (*keep contained*)
- Oregano
- Ramps
- Rosemary
- Sage
- Strawberry
- Thyme

## Shrubs

- Aronia berry
- Blueberry
- Blackberry
- Elderberry
- Hazelnut
- Raspberry

*Green = native plants*



# Garden maintenance



- Tips and tricks for a thriving garden ecosystem





# Beginning-of-season maintenance



- Soil test – what nutrients do you need?
- Add amendments – compost, manure
- Top up mulch – untreated is best
- Till compacted areas as needed
- \*Don't disturb soil / fallen leaves until temps are in the 50s – that's where all the pollinators are hibernating!
- If you can, leave that old material as compost





# End-of-season maintenance

- Cover your soil
- Replenish nutrients
- Leave the leaves
- \*Remove any diseased or infested plants





# Have fun & happy gardening!





# Further Resources

- SummitMetroParks.org → things to do → Grow a Wild Back Yard
- Native Plant Festival: May 17
- Good Garden Talks: May - October
  
- OSU Extension
- Mother Earth News
- Fruition Seeds
- YouTube
  - Self Sufficient Me
  - Growing a Greener World



**Good Garden Talks**  
6:00-7:00pm  
Programs are Free!  
No registration required

For additional information call (330) 745-9700